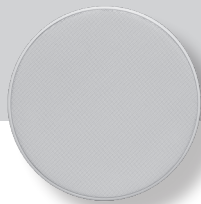
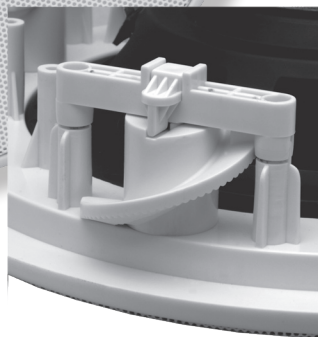
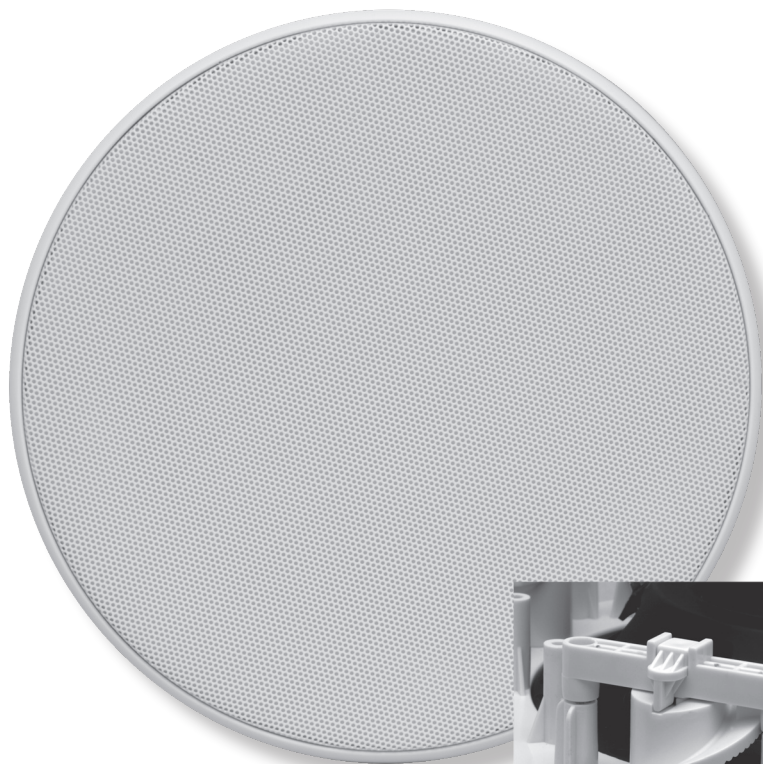


APart

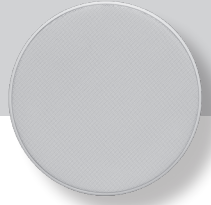


# MANUAL



## CM6QFT

The new contractor's reference



## **The new contractor's reference**

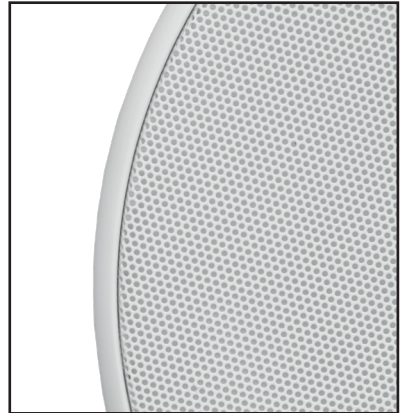
The APart CM6QFT, the new contractor's reference: reduces the install labour drastically.

The APart CM6QFT 2-way built-in ceiling loudspeaker can be used as a 16 Ohm or 100 Volt loudspeaker. In 16 Ohm use, you can connect up to 4 loudspeakers in parallel on each channel of a standard 4 Ohm amplifier. For 100 V use, the CM6QFT is equipped with a high-quality 6 Watt 100 Volt transformer with several power tapings. The loudspeaker has a 6 ½" paper cone woofer what results in a very low distortion. To complete the sound a 1" tweeter has been integrated.

It makes the CM6QFT very suitable for the distribution of microphone calls and back ground music. The housing is made of high quality ABS. The grille is made of steel. The standard colour is white.

## **Product Highlights**

- **Patented Quick Fit system breaks all speed records**
- **No screws : fix and finish with 4 clicks only**
- **Self adjusting clamp strength**
- **Allowed board tickness : 12.5 to 29 mm**
- **Discrete and stylish**
- **Ultra thin plastic edge**
- **Smooth flat design**
- **Strong metal grill**



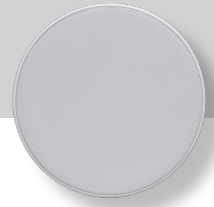
## **Speaker power settings**

100V/1.5W : Black (common) – yellow

100V/3W: Black (common) – red

100W/6W: Black (common) – brown

16 ohm: first disconnect the red and black wire between transformer and speaker. Connect the speaker line to the free wire end on the speaker. Black = common, red = signal.



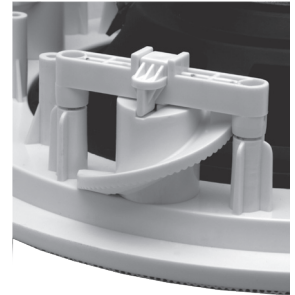
## Mounting instructions

The loudspeaker is easy to install, due to its simple, quick mounting system.

Remove the grill before mounting, use the special grille removal tool and carefully take out the grille.



Make sure the mounting clamps are turned inward, if this is not the case, insert the hex key in all four holes on the front and turn it 180 degrees counterclockwise until you hear a click. Insert the speaker in the ceiling and activate the automatic clamp system. Use the supplied hex key, but this time you insert the round side in the four holes on the front. Push the key to release the 4 clamps. Carefully push the grille back in place. That's it.



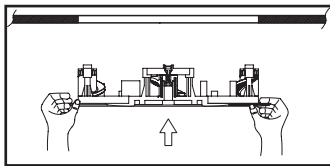
Use this hex side to load the spring of the clamps.



Use this round side to push the key to release the 4 clamps.

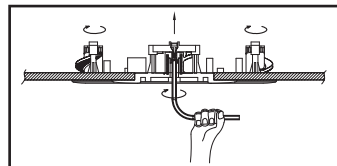


### Mounting

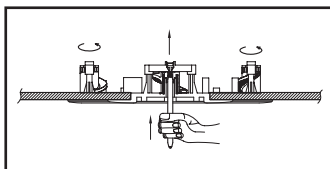


Position the speaker in the ceiling.

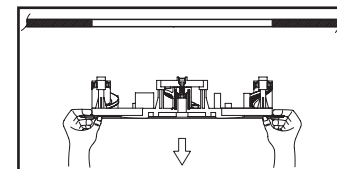
### Dis-mounting



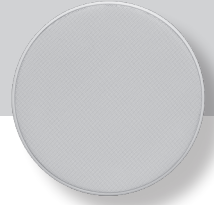
Turn the spring clamps 180° counterclockwise until you hear a click.



Activate the spring clamps by pushing the four spring clamp buttons with the round end of the tool.



Take out the speaker.



## **General technical specifications**

Type	2 - Way HiFi
Woofers	6.5" paper cone
Tweeter	1" Soft Dome
Rated Power RMS	6 W / 100Volt
Music Power RMS	10 W / 100Volt
Rated Power RMS	40 W / 16Ω
Music Power RMS	60 W / 16Ω
Sound Pres. Level (SPL) 1W/1M	91dB
Frequency range	60 Hz - 20 kHz
Trafo Power Tappings	6 - 3 - 1.5W
Dispersion @ 1-4-8 KHz	180° - 80° - 45°
Dimensions outside Ø	237mm
Dimensions Cutout Ø	216mm
Depth	65mm
Ceiling thickness	12.5 – 29mm
Weight	1.1Kg

### **ANY SUGGESTION?**

**They are well appreciated and eventually rewarded!  
Send your ideas or suggestions to**

**[suggestions@apart-audio.com](mailto:suggestions@apart-audio.com)**

Company names, product names, and names of formats etc. are the trademarks or registered trademarks of their respective owners.

© 2009 APart-Audio specifications subject to change without notice.

CM6QFT is developed by

Audioprof nv  
Lanteernhofstraat 90  
BE-2100 Deurne  
BELGIUM

